



MEMORY MAKER

*Equipped for gatherings,
this kitchen is designed
to host a lifetime of
special moments with
family and friends.*

written by JAN SOULTS WALKER
photographer ANTHONY-MASTERSON
field editor SANDRA L. MOHLMANN

This pristine white kitchen features mostly solid cabinetry doors because homeowner Midge Fleming "didn't want to have to worry about keeping things looking neat behind glass doors." Glass-front cabinets near the ceiling display a pair of her grandmother's vases.

g

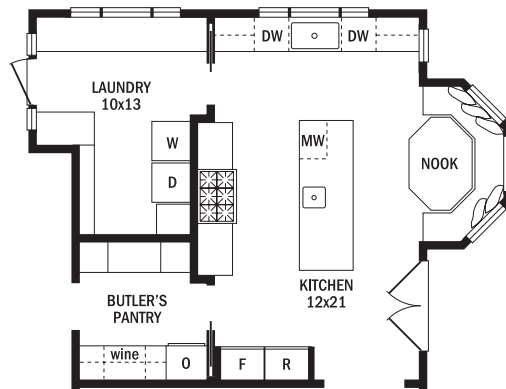
olden-greenish waves of marsh water lapping the shoreline, shrimp boats coming and going, and glorious sunsets all year long—these are the scenes Midge and Dick Fleming treasure most from their new home on Seabrook Island, South Carolina. They especially love that their kitchen is designed to capture every view and serve as a cherished setting for gatherings of family and friends—the reason Midge affectionately refers to it as “Fleming Central.”

Architect Samuel Furr ensured the kitchen’s vitality by locating it adjacent to the family room, the formal dining room, and the porch, which is just outside a pair of glass-panel wood doors. “In South Carolina, you live on the porch,” Midge says. Even so, all the action revolves around the traditional kitchen that interior designer Regina Garcia created.

Crisp white inset cabinetry with recessed panels, simple furniture-style feet, and brushed-nickel pulls and knobs establish the classic look. Matching cabinet panels minimize the appearance of two 27-inch built-in refrigerators and four dishwasher drawers. “I wanted everything hidden so that it is a beautiful room and nothing interferes with the view,” Midge says. “But it is also a working room.”

Enhancing the vintage elegance are white marble perimeter countertops. Soft gray walls pick up the veining in the stone. “The white cabinetry against the pale gray provides subtle contrast and a little bit of warmth but doesn’t distract from the uniformity of the kitchen,” Garcia says.

Enriching the look while carefully balancing the abundance of white and shining metal accents are handsome mahogany-stained walnut exterior doors, elegant Brazilian cherry floors, and dramatic Blue Pearl granite on the island. Tall windows above the kitchen sink and a window-wrapped bay with a banquette bring in more room-warming sunlight. “We can gather



opposite: Pairs of dishwasher drawers flank the main sink and complete the well-equipped cleanup station. **below left:** At the end of the cooking aisle, dual refrigerators hide behind custom panels. **below middle:** A honed finish on the Blue Pearl granite island top allows the crystallized pattern of the stone to stand out. **below right:** Locating double ovens in the butler’s pantry preserves the appliance-free look of the kitchen.



DESIGN TIP
Dishwasher
drawers are ideal
for smaller or
more frequent
loads. Custom
cabinetry panels
create a seamless
look, keeping the
appliances hidden
when not in use.





five adults and our three grandchildren around the banquette,” Midge says. “We use it to enjoy informal suppers with lots of gumbo. When we have dinner parties, we expand to the dining room and the porch.”

When the Flemings entertain larger groups, the adjoining butler’s pantry comes into play as additional space for preparing food and plating meals. Designed with cabinetry and countertops that complement those in the kitchen, the pantry includes double wall ovens, a wine refrigerator, and an icemaker. The room also features another wall of floor-to-ceiling cabinetry—configured to mimic an antique linen press but equipped with a contemporary locking system for safeguarding family heirloom linens and silver pieces.

Beyond the elegant design and the modern features, Midge and Dick say their kitchen holds something even more dear to them—the memories already made and those to come. “We built this house so that our children and grandchildren can develop roots and wings,” Midge says. “Every time I come into this kitchen, it makes me happy. It is a very special space.” **KBI**

RESOURCES BEGIN ON PAGE 134.

TAKEAWAYS

1

Dressy white cabinetry conveys vintage elegance.

2

A banquette in a windowed bay provides a spot for casual meals.

3

Dark granite atop the island balances the light marble on the perimeter.

4

A well-equipped butler’s pantry eases entertaining.

5

Multiple sinks make it convenient for more than one person to prepare meals.





opposite above: An adjacent mudroom/laundry rounds out the kitchen suite, providing a separate entry for the family. A pocket door can close off the space from the kitchen when desired. **opposite below:** A cozy banquette tucks into a window-wrapped bay that extends into the porch area, almost becoming a part of the outdoors. The oval window overlooks a dining table on the porch. **this photo:** The octagonal table has a leaf that folds down when the extra surface isn't needed. Drawers under the banquette store grandchildren's treasures.